

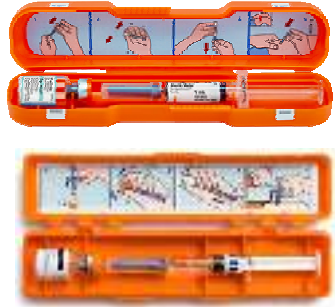



Glucagon Emergency Devices and Instructions for Managing Severe Hypoglycemia

Glucagon is safe; it is a hormone made in the pancreas and raises glucose. There is no danger of taking too much. Possible side effects are nausea and vomiting.

Glucagon comes in a kit, a pre-filled syringe, or nasal powder. The kit contains everything you need in case a child with diabetes has a severe low glucose. The kit includes a bottle of glucagon (the dry powder) and a syringe of clear liquid. The nasal powder, pre-filled syringe and pen are mixed and ready to administer.

<p>A.</p> 	<p>B.</p> 	<p>C.</p> 	<p>D.</p> 
<p>BAQSIMI® (glucagon) nasal powder 3mg (Lilly)</p>	<p>Gvoke® HypoPen® (Glucagon) premixed autoinjector HypoPen comes in dosages of 0.5 mg or 1 mg (Xeris®)</p>	<p>Glucagon Emergency Kit (Fresenius Kabi) and GlucaGen® HypoKit® (Novo Nordisk®) <i>stopped making HypoKit 7/1/2024</i></p>	<p>ZEGALOGUE® (glucagon injection) autoinjector</p>

Points to Remember:

- Check the manufacturer's expiration date on the kit or on the vial that contains the glucagon powder at the time of purchase. Write the expiration date of the kit on your calendar.
- When the kit expires, practice mixing and drawing up glucagon before throwing it away.
- After mixing, the solution should be clear and used immediately. Discard any unused portion and reorder kit.
- Baqsimi®: Do not remove shrink wrap until time of use.
- Gvoke®: Do not open the pouch until time of use.

A. Giving Baqsimi[®] (glucagon) nasal powder

1. Pull red stripe to remove shrink wrap (DO NOT REMOVE SHRINK WRAP OR OPEN TUBE UNTIL READY TO ADMINISTER).
2. Open lid and remove device from tube.
3. Administering dose:
 - a. Hold device between fingers and thumb.
 - b. Insert tip into one nostril until finger(s) touch the outside of the nose.
 - c. Push plunger firmly all the way in. (The dose is complete when green line disappears).
4. Turn the child on their side in case of nausea or vomiting. **Call 911 and parent(s).**
5. Stay with the child until emergency help arrives.
6. When the child awakens and can swallow, encourage the child to take small sips of a carbohydrate containing fluid (fruit juice or regular pop). If tolerated, follow with 15 grams of a carbohydrate and fat-containing food (such as peanut butter and crackers).

www.baqsimi.com/how-to-use-baqsimi (instructional video)

B. Giving Gvoke[®] HypoPen[®] premixed autoinjector

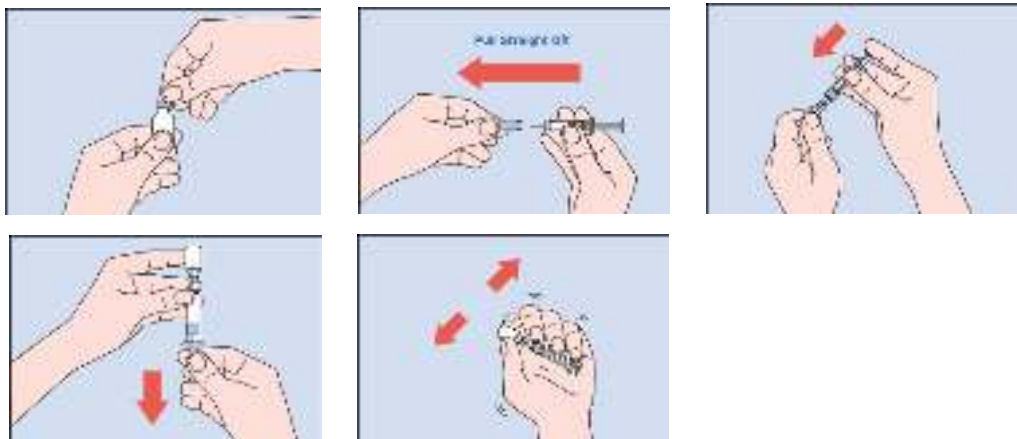
(Make sure you keep Gvoke[®] in its original sealed pouch until you are ready to use it).

1. Pull red cap off.
2. Administer into the upper arm, stomach or thigh.
3. Push yellow end down on skin and hold for 5 seconds. Window will turn red when injection is complete.
4. Turn the child on their side in case of nausea or vomiting. **Call 911 and parent(s).**
5. When the child awakens and can swallow, encourage the child to take small sips of a carbohydrate containing fluid (fruit juice or regular pop). If tolerated, follow with 15 grams of a carbohydrate and fat-containing food (such as peanut butter and crackers).

www.gvokeglucagon.com

C. Preparing and Giving Glucagon Emergency Kit:

1. Remove the orange flip-off seal from the bottle of glucagon.
2. Remove the needle protector from the syringe and inject the entire contents of the syringe into the bottle of glucagon.
3. Keep the syringe in the vial and gently shake bottle until liquid is clear.
This cannot be mixed ahead of time.
4. Using the same syringe, draw the glucagon into the syringe to the prescribed dose.



Giving the Glucagon Emergency Kit

1. Pinch the skin, insert the needle into the child's upper arm, thigh or backside and inject the entire contents of the syringe. Withdraw the needle from the skin.
2. Turn your child onto their side in case of nausea and vomiting.
3. **Call 911 and parent(s).**
4. When the child wakes up and can swallow, urge the child to take small sips of a carbohydrate-containing fluid (fruit juice or regular pop). If tolerated, follow with 15 grams of a carbohydrate and a fat-containing food (such as cheese and crackers).

www.cincinnatichildrens.org/service/d/diabetes

D. ZEGALOGUE® autoinjector

- ZEGALOGUE® can be stored at room temperature (68-77 degrees) for 12 months or in refrigerator. If stored at room temp, do not return to refrigerator.
- **Steps for administration for Autoinjector (Keep ZEGALOGUE® in red case until ready to use):**
 1. Remove gray cap from needle by pulling straight off.
 2. Push and hold ZEGALOGUE® down for 10 seconds. You may hear a click.
 3. Window should turn red. You may hear a second click.
 4. Remove ZEGALOGUE® by pulling straight up, yellow needle guard will cover needle.
 5. Place the child on their side in case of vomiting and to prevent choking.
 6. **Call 911 and parent(s)** after you have injected ZEGALOGUE®.
 7. If person does not respond after 15 minutes, another dose may be given, if available.
 8. Once the person can safely consume food or drink, give 15 grams of carbohydrates (such as crackers with cheese or peanut butter).
- Replace the used ZEGALOGUE® so you will have a new one in case you need it.

www.zegalogue.com/why-zegalogue/how-to-administer.html